

## Introducing the Harbour Reception Desks

We're proud to offer the "Harbour Receptions" at a remarkable value, ensuring you and your clients get more for your investment.

### Harbour Reception Desks

Multiple Sizes and Colours

#### Specifications:

##### Finishes Available:

Tuxedo, Stratus, White

##### Available Sizes:

48" Width, 60" Width, 72" Width

##### Harbour Reception List Prices:

48" wide - IHP48: \$860

60" wide - IHP60: \$1,200

72" wide - IHP72: \$1,350

##### Optional Add-Ons:

White Waterfall Edge is available for all the sizes listed above for an additional cost of \$475.

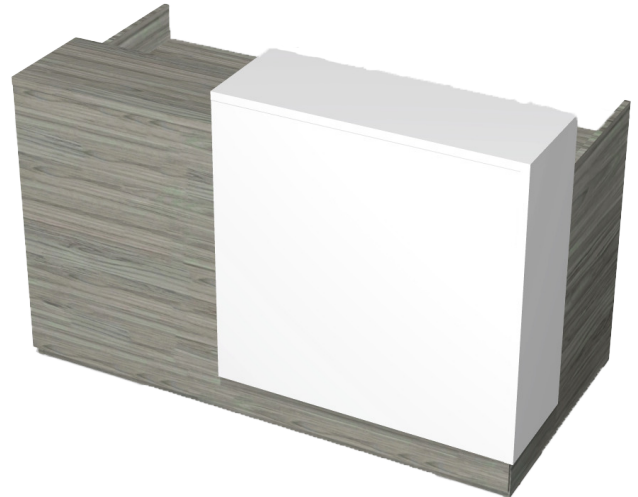
##### Optional Underdesk Storage:

For the 48" Harbour Reception Desk, you may choose one of the following additional underdesk storage solutions:

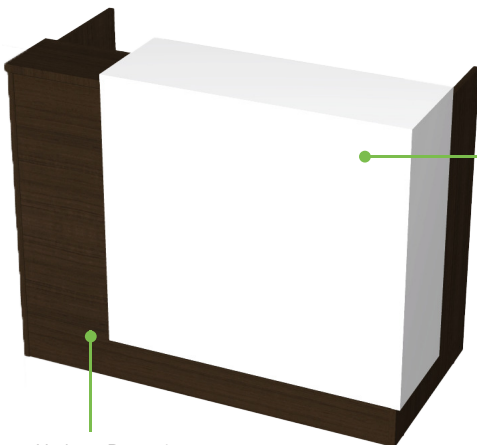
Hanging Box/File Box/Box/File File/File

For the 60" or 72" Harbour Reception Desk, you have the flexibility to select up to two of the following supplementary storage solutions:

Hanging Box/File Box/Box/File File/File



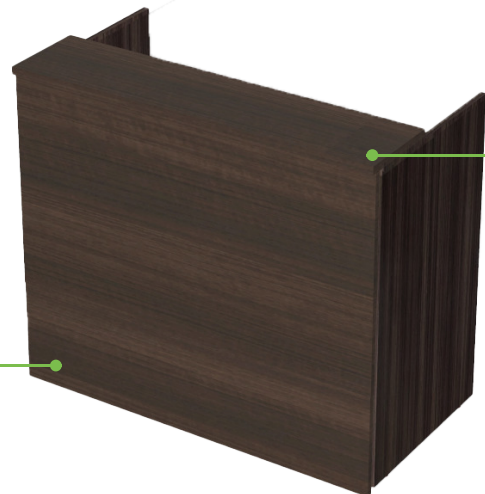
## HARBOUR RECEPTION DESK FEATURES



Harbour Reception desks come in three different desk width sizes. 48", 60" and 72" wide.

As an add-on option, the "Harbour Waterfall Edge" is available for \$475.00.

The 60" and 72" wide reception desks also feature a stylish white desk top option to complement your design



Underdesk storage can be added on to all the Harbour Reception desks. The 48" wide desk offers one underdesk storage option, while the 60" and 72" offer the flexibility of having two storage options.